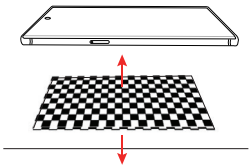
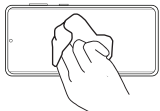


- 1** Place the mounting pad on a sturdy surface, and place your phone on top of it. This will help keep the phone in place during installation.

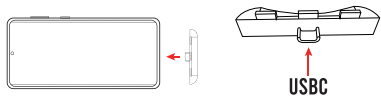


- 2** Begin by cleaning the screen with the Wet/Dry Wipes and the Dust Removal Stickers.

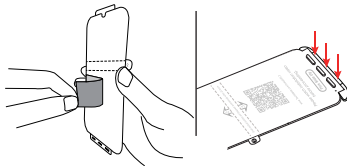
**Please watch the installation video carefully before installing the screen protector.*



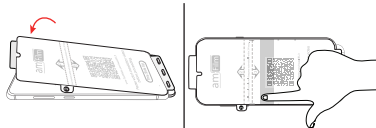
- 3** Fully insert the alignment tool into your phone's USB-C port, making sure it is flush against the bottom of your phone.



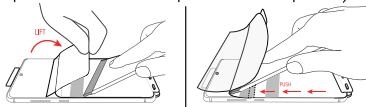
- 4** Remove the Tab 1 film carefully, and place the three hole punch part of the screen protector onto the pegs of the alignment tool. Please make sure that the side has print "This Side Up" on it is face up.



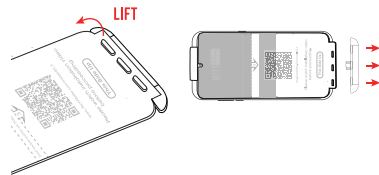
- 5** Carefully align the protector to your phone's screen, and once in place, swipe on the middle adhesive strip.



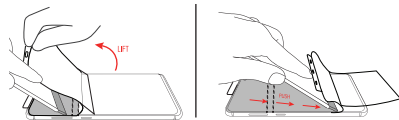
- 6** Lift the loose end with tab 2, starting from the middle of the protector at the adhesive strip. Use the squeegee to push the tab 2 film out from underneath (effectively rolling and adhering the top half of the screen protector into place.)



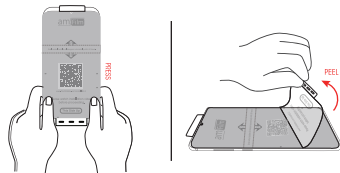
- 7** Lift the perforated tab off the pegs of the Alignment Tool and remove the tool from the phone's USB-C port.



- 8** Repeat Step 6 for the bottom half of the screen protector.



- 9** Push with thumbs along the protector to seal it in place and remove the top mask film.



Damaged or Arrived Broken?

Try our 1-Click Warranty Claim

Go to TechMatte.com/WarrantyClaim

OR

Scan the QR Code Below.



Want More Coverage?

Unlock our Lifetime Warranty

Go to TechMatte.com/Register

OR



24/7 Customer Support



support@techmatte.com

www.techmatte.com

STAY CONNECTED



@TechMatte



@TechMatte



/TechMatte

amFilm®

Installation Guide

Scan Me



or visit

www.TechMatte.com/install/EL3